



The 95th National Sports Festival - Sailing

2014. 10.28 ~ 2nd Nov / Jeju

Sailing Instructions

1. Rules

- 1.1 The regatta will be governed by the rules as defined in The Racing Rules of Sailing (RRS) 2013-2016.
- 1.2 No national authority prescriptions will apply.
- 1.3 If there is a conflict between languages the English text will take precedence.
- 1.4 Appendix P, Special Procedures for Rule 42, will apply.
- 1.5 Class rules will apply.
- 1.6 Notice of Race and Sailing Instructions will apply. If there is a conflict between Notice of Race and Sailing Instructions, Sailing Instructions will take precedence. (This changes RRS .63.7).
- 1.7 The Basic Principles, RRS 2, RRS 3, RRS 69 are especially highlighted in this event.
- 1.8 Boats shall display event advertising supplied and instructed by the organizing authority.

2. NOTICES TO COMPETITORS

Notices to competitors will be posted on the official notice boards located in front of the Race Office.

3. CHANGES TO SAILING INSTRUCTIONS

Any change to the sailing instructions will be posted before 0900 on the day it will take effect. Any change to the schedule of races except the instruction 5.3 will be posted by 2000 on the day before it will take effect.

4. SIGNALS MADE ASHORE

- 4.1 Signals made ashore will be displayed at the official flag mast at the venue.
- 4.2 When flag AP is displayed ashore, '1 minute' is replaced with 'not less than 60 minutes' in the race signal AP.

5. SCHEDULE OF RACES

5.1 The schedule is as follows:

Date	Time	Activities	Remark
28 Oct	09:00~11:00 10:00~14:00 18:00~	· Registration · Measurement · Opening Ceremony / dinner	
29 Oct	10:55~	· First warning signal (Race 1, 2)	
30 Oct	09:00~ 10:55~	· Team Leaders Meeting · First warning signal (Race 3, 4)	
31 Oct	09:00~ 10:55~	· Team Leaders Meeting · First warning signal (Race 5, 6)	
1 Nov	09:00~ 10:55~	· Team Leaders Meeting · First warning signal (Race 7, 8)	
2 Nov	08:00~ 09:55~ 16:00	· Team Leaders Meeting · First warning signal (Race 9) · Award giving ceremony	

5.2 Totally 9 races are scheduled.

5.3 If the scheduled number of races is behind, a third race can be sailed without the need for a notice changing the



Sailing Instructions.

5.4 On the last day of the regatta only one race will be sailed and, no starting signal will be made after 13:00.

6. Class Flags

The class flags are as follows:

Class	Flag
420	Red flag with blue class logo in a white circle
470	White flag with blue class logo
RS:X (High School)	Blue flag with white class logo
RS:X (Senior)	White flag with blue class logo
Laser (High School)	Green Flag with red class logo
Laser (Senior)	White flag with red class logo
Hobie 16	Blue flag with red class logo

7. RACING AREAS

Attachment 1 shows the location of racing areas.

8. RACING AREA RESTRICTION THE COURSES

8.1 The diagrams in Attachment 2 shows the courses, including the approximate angles between legs, the order in which marks are to be passed, and the side on which each mark is to be left.

8.2 No later than the warning signal, the race committee signal boat will display the approximate compass bearing of the first leg.

8.3 Trapezoid course will be used for all classes except Hobie 16: Windward-Leeward courses will be used for Hobie 16.

8.4 Attachment 3 shows the restricted area only official support boats can enter.

9. MARK

Marks	Mark's Colour/Shape	Start and Finish marks	Replacing mark
Mark 1,2,3,4	Yellow Cone	White Cone	Red cylinder with blue stripes
Mark 1H for Hobie 16	Orange Cone		Yellow cube with blue stripes

10. AREAS THAT ARE OBSTRUCTIONS

There are no areas that are obstructions

11. THE START

11.1 Races will be started by using RRS 26 with the warning signal made 5 minutes before the starting signal.

11.2 Course signal flag (Inner, Outer) will be displayed before or with the warning signal.

11.3 The starting line will be between a staff displaying an orange flag on the RC boat at the starboard end and the port-end starting mark.

11.4 Boats whose warning signal has not been made shall avoid the starting area and stay 50 meters away backward from the start line during the starting sequence for other races.

11.5 When General Recall has been applied, all boats affected shall return to the starting area outside of the start



line and the new start of the affected class shall be made at the last of the starting sequence. This changes RRS 29.2.

- 11.6 A boat starting later than 4 minutes after her starting signal will be scored Did Not Start without a hearing. This changes RRS A4 and A5.

12. CHANGE OF THE POSITION OF NEXT MARK

- 12.1 To change the next leg of the course, the race committee will lay a new mark (or move the finishing line) and remove the original mark as soon as practicable. When in a subsequent change a new mark is replaced, it will be replaced by an original mark.

13. THE FINISH

- 13.1 The finishing line will be between the red striped staff on the finish boat and the white finishing mark.

14. PENALTY SYSTEM

- 14.1 RRS 44.1 and 44.2 will apply. For the RS:X class, RRS Appendix B will apply.
- 14.2 For the Hobie 16 class, rule 44.1 and 44.2 are changed so that the Two-Turns Penalty is replaced by the One-Turn Penalty including one tack and one gybe.
- 14.3 A boat which has taken a penalty turn under RRS 31 or RRS 44.1, 44.2 or Appendix B shall report and sign on the penalty taken report prepared on the official notice board within protest hearing time limit.
- 14.4 Appendix P will apply as changed by instructions 14.1 and 14.2.
- 14.5 Breaches of instructions 1.8, 11.4, 11.5, 18 and breaches of rule 55 will not be grounds for a protest by a boat. This changes rule 60.1(a). For these breaches the jury may apply a lesser penalty in place of disqualification.
- 14.6 A boat which fails to comply with Sailing Instructions 21.1, 21.2 or 21.3 shall not go to the racing area thereafter and can be referred to the KSAF reward and punishment committee for suspension.

15. TIME LIMITS AND TARGET TIMES

- 15.1 Time limits are as follows:

Class	Time limit	Mark 1 Time limit	Target time
All	70 min.	25 min.	50 min

- 15.2 If no boat has passed Mark 1 within the Mark 1 time limit, the race will be abandoned. Failure to meet the target time shall not be grounds for redress. This changes rule 62.1(a).

- 15.3. Boats failing to finish within the time limit will be scored Did Not Finish without a hearing. (This changes rules 35, A4 and A5)

16. PROTESTS AND REQUESTS FOR REDRESS

- 16.1 Protest forms are available at the jury room. Protests and requests for redress or reopening shall be delivered there within the appropriate time limit.
- 16.2 For each class, the protest time limit is 90 minutes after the last boat had finished the last race of the day or the race committee signals no more racing today, whichever is later.
- 16.3 Notices will be posted no later than 30 minutes after the protest time limit to inform competitors of hearings in which they are parties or named as witnesses.
- 16.4 Notices of protests by the race committee or the International Jury will be posted to inform boats under rule 61.1(b) and it will be posted no later than 30 minutes after the protest time limit.
- 16.5 A list of boats that, under the instruction 14.4, have been penalized for breaking rule 42 will be posted.
- 16.6 "Authority responsible" of RRS 64.3(b) is the measurement committee of this regatta.
- 16.7 On the last scheduled day of racing a request for reopening a hearing shall be delivered
- (a) Within the protest time limit if the requesting party was informed of the decision on the previous day;



(b) No later than 30 minutes after the requesting party was informed of the decision on that day.

This changes rule 66.

16.8 In addition to RRS 61.1, a protesting boat shall inform the finish boat of its intention to protest and the boat to protest. If impossible, the protesting boat shall submit to the protest committee the reason in written at the first reasonable time after returning to shore.

16.9 Decisions of the international jury will be final as provided in rule 70.5.

17. SCORING

17.1 Low point system of RRS Appendix A will apply.

17.2 If there is a series-score tie, Appendix A8 will apply for all classes. This changes B8

17.3 One (1) race is required to be completed to constitute a series.

17.4 (a) When fewer than 6 races have been completed, a boat's series score will be the total of her race scores.

(b) When 6 or more races have been completed, a boat's series score will be the total of her race scores excluding her worst score.

17.5 When a boat thinks her score is not correct, the boat shall complete the score correction request form with reasons, after finding a witness, may request for correction.

18. SAFETY REGULATIONS

18.1 A boat that retires from a race shall notify the race committee and sign on the retire report prepared on the official notice board

18.2 All competitors shall wear personal flotation device while racing. This changes RRS 40.

18.3 All boat must have a towing rope in addition to the safety equipment required of her class rule or must comply with measurement regulations if class rule does not specify.

18.4 Sailors shall check in and check out daily by their own hand writing just before going afloat, and immediately after coming ashore.

19. REPLACEMENT OF CREW OR EQUIPMENT

19.1 Substitution of competitors will not be allowed.

19.2 Replacement of damaged or lost equipment will not be allowed. However, a boat shall inform of equipment damaged or lost to the race committee when it happens just before her start, and then shall submit the replaced equipment and letter of reason after the finishing of the last race of that day within protest time limit to the race committee and get measurement approval.

20. OFFICIAL BOATS

20.1 Official boats will be marked with race officials flags.

21. SUPPORT BOATS

21.1 Coach boats shall check in and check out daily by her own handwriting on the check in-out report prepared at the venue and shall display her association flag (Minimum 90cm x 30cm) or be marked with the name of her association on the engine (Minimum. 40cm x 30cm) to identify herself.

21.2 All support boats or coach boats shall stay outside racing areas where boats are racing from the time of the preparatory signal for the first class to start until all boats have finished or the race committee signals abandonment.

21.3 Breaches of the instruction 21 will be judged by the race committee or the judges and support boats that breaches this instruction shall follow the race committee's or judge's instruction.

21.4 Media boats may stay in the racing while racing with approval from the race committee.

21.5 When flag Y is displayed on the race committee boat, all boats may enter the racing area to provide safety support while racing is on.

22. RADIO COMMUNICATION

Except in an emergency, a boat shall neither make radio transmissions while racing nor receive radio communications not available to all boats. This restriction also applies to mobile telephones.



23. TRASH DISPOSAL

A competitor shall not intentionally put trash in the water (RRS 55). Trash may be placed aboard support or official boats.

24. PRIZES

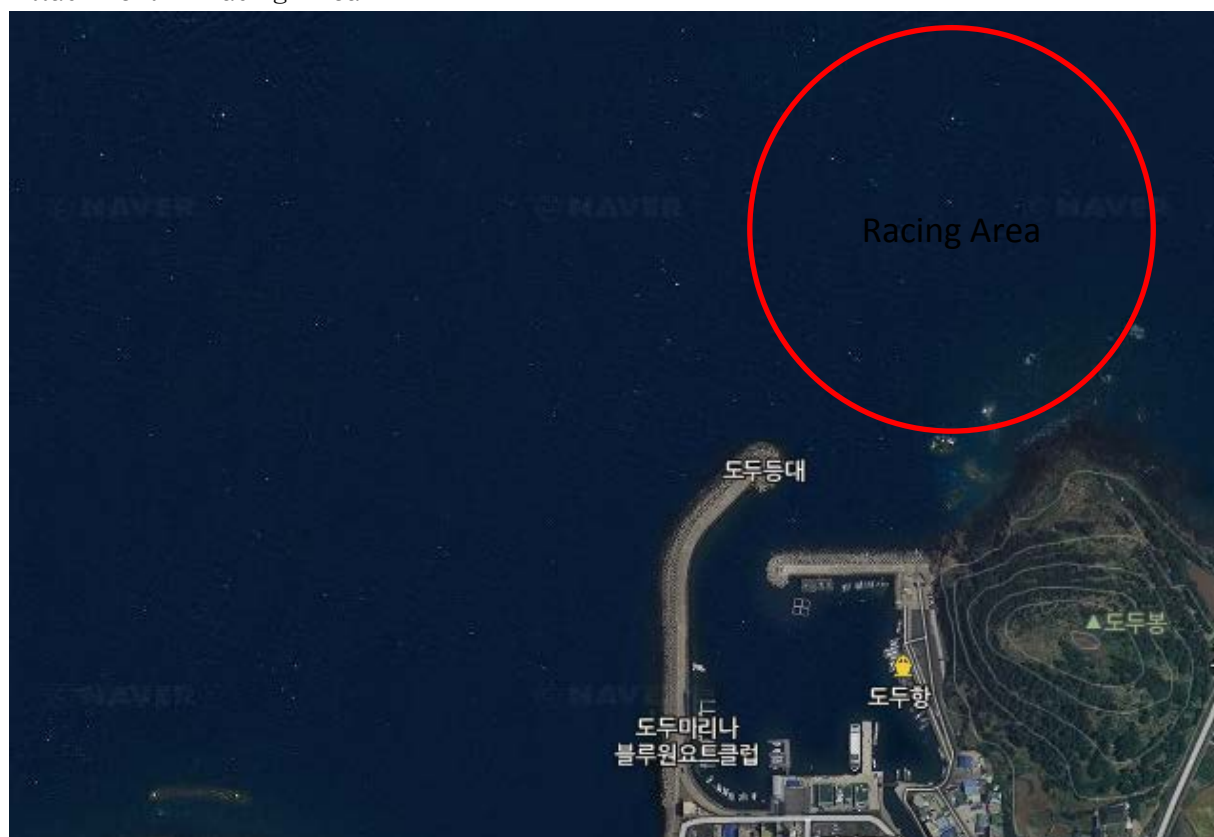
Prizes will be given under the prescription of the 95th National Sports Festival.

25. DISCLAIMER OF LIABILITY

Competitors participate in the regatta entirely at their own risk. See rule 4, Decision to Race. The organizing authority will not accept any liability for material damage or personal injury or death sustained in conjunction with or prior to, during, or after the regatta.



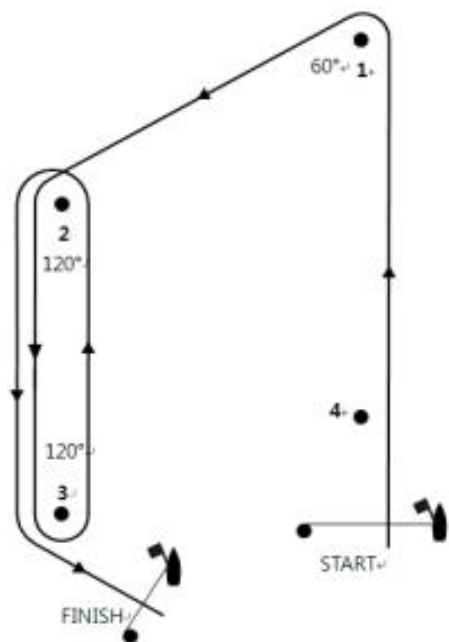
Attachment 1: Racing Area





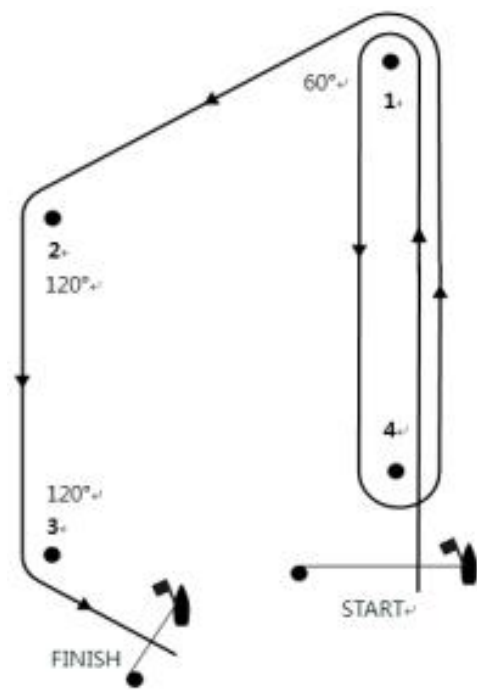
Attachment 2: The Courses

420, 470, Laser, RS:X Trapezoid (Out)



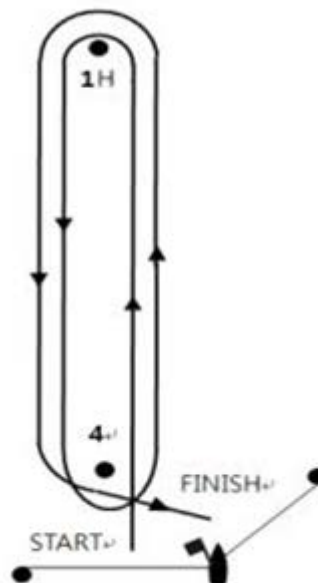
*S⇒1⇒2⇒3⇒2⇒3⇒F

Trapezoid (In)



*S⇒1⇒4⇒1⇒2⇒3⇒F

Hobie 16 Windward-Leeward



H

*S⇒1-1⇒4⇒1-1⇒4⇒F



Attachment 3: Restricted Area

