



2016

INTERNATIONAL 420 CLASS WORLD CHAMPIONSHIP
INTERNATIONAL 420 CLASS LADIES WORLD CHAMPIONSHIP
INTERNATIONAL 420 CLASS U17 WORLD CHAMPIONSHIP
15-23 JULY 2016 - SAN REMO, ITALY



Venue: Marina degli Aregai, San Remo, Italy
Organizing Authority: Yacht Club Sanremo
In Partnership with: Federazione Italiana Vela, Italian 420 Class Association and the International 420 Class Association

[NP] denotes that a breach of this rule will not be grounds for protest by boat.

[DP] denotes a rule for which the penalty is at the discretion of the International Jury and may be less than disqualification.

[SP] denotes a rule for which a standard penalty may be applied by the race committee without a hearing.

1. RULES

- 1.1 The regatta will be governed by the Rules as defined in the Racing Rules of Sailing (RRS).
- 1.2 RRS Appendix P, Special Procedures for Rule 42, will apply.
- 1.3 No National Authority prescriptions will apply.
- 1.4 If there is a conflict between languages the English text will take precedence.

2. [DP] [NP] ADVERTISING AND BOW NUMBER

- 2.1 Boats may be required to display bow numbers and/or advertising chosen and supplied by the Organizing Authority.
- 2.2 In accordance with WS (World Sailing) Regulation 20.4.3, competitors aboard the boats ranking first, second, and third in the series at the beginning of that day shall wear yellow, blue and red bibs respectively while racing. The bibs will be provided by the Organizing Authority.
 - 2.2.1 [SP] Boats are required to display national flags on their mainsail according to Class rule C.10.3.1.(e). Approved national flag manufacturers are listed at: <http://www.sailing.org/classesandequipment/l420.php>

3. EVENTS FORMAT

Each event will consist of a qualifying series and a final series.



3.1 Qualifying series – 6 races scheduled for each event, crews will be divided into fleets. The number of fleets will be as defined below:

- One fleet up to 50 boats,
- Two fleets from 51 to 100 boats,
- Three fleets for more than 100 boats.

The numbers of fleets may be changed by the Organizing Authority when the total number of entries is close to the limits stated in this NoR.

3.2 Final series – 6 races scheduled for each event, crews in the qualifying series will be divided into final fleets according to the final scores of the qualifying series.

There will be the same number of fleets as in the qualifying series.

The fleets will have approximately the same number of crews in each.

The Gold fleet will consist of the first part of the final scores of the qualifying series, Silver fleet of the second part, and so on.

If there are fewer than 50 entries at an event, then the championship will be competed in one fleet (single series) with 12 final races.

4. EVENTS SCHEDULE

Day 1 - 15 th July	Registration and equipment inspections	0900-1900
Day 2 - 16 th July	Registration and equipment inspections	0900-1900
Day 3 - 17 th July	Registration and equipment inspections Practice Race: warning signal Opening Ceremony	0900-1800 1400 1900
Day 4 - 18 th July	Qualifying series	12:00
Day 5 - 19 th July	Qualifying series	TBA
Day 6 - 20 th July	Qualifying series	TBA
Day 7 - 21 st July	Qualifying/Final series	TBA
Day 8 - 22 nd July	Qualifying/Final series	TBA
Day 9 - 23 rd July	Qualifying/Final series Prize Giving and Closing Ceremony	TBA 1900

No warning signal will be given on the last day after 1700.

5. ELIGIBILITY

5.1 The championships are only open to International **420** dinghies.

5.2 World Sailing (WS) eligibility according to **WS Regulation 19** is required of all athletes.

5.3 Each competitor shall be a member of his National Class Association and, if relevant, of his National Authority.

5.4 Each competitor shall be entered by his National **420** Class Association or by his Federation/National Authority if such an Association does not exist.



6. ENTRIES AND RESTRICTIONS

6.1 WORLD CHAMPIONSHIP

Entries for the World Championship shall be limited in accordance with the International **420** Class Association Guidelines: **7** boats for each country and **14** boats for the host country in each championship.

Only men or mixed crews are authorised to enter the World Championship.

6.2 LADIES WORLD CHAMPIONSHIP

Entries for the Ladies World Championship shall be limited in accordance with the International **420** Class Association Guidelines: **7** boats for each country and **14** boats for the host country in each championship.

Only ladies crews are authorised to enter the Ladies World Championship.

6.3 U17 WORLD CHAMPIONSHIP

Entries for the U17 World Championship shall be limited in accordance with the International **420** Class Association Guidelines: **6** boats (3 boats men or mix + 3 boats ladies) for each country and **12** boats (6 boats men or mix + 6 boats Ladies) for the host country.

All entries to the U17 World Championship will race in one fleet. If there are less than 30 entries the U17 fleet will be included in the respective of Worlds and Ladies fleet.

7. REGISTRATION

All entries shall be made on-line at the International 420 Class Website: 2016worlds.420sailing.org before **15 June 2016**.

Please ensure that the on-line entry form is printed, the required signatures obtained and the completed form brought to Registration.

Entry fee per boat: **EUR300**

Entry fees shall be paid in EUROS by swift to:

International 420 Class Association

Account No: 210 - 0467 - 180 - 80

BNP Paribas Fortis Nieuwpoort-Centrum, Langestraat 56,
B-8620 Nieuwpoort, BELGIUM

IBAN: BE47 2100 4671 8080

SWIFT CODE: GEBABEBB

Before: **15 June 2016**

ALL BANK TRANSFERS SHOULD BE CLEARLY ANNOTATED WITH THE NAME OF THE COUNTRY, THE EVENT AND THE SAIL NUMBERS AND/OR NAMES OF THE COMPETITORS.

Each entry and fee not received by 15 June 2016 may not be accepted and shall be subject to a supplementary fee of EUR75.

Entry fees to be paid by coaches, team leaders and representatives from participating nations are **EUR75 per person** and will be paid direct to the Organizing Authority at registration.



8. DISCLAIMER OF LIABILITY

Competitors participate in the regatta entirely at their own risk. See RRS 4, Decision to Race. The Organizing Authority and all parties involved in the regatta organization will not accept any liability for material damage or personal injury or death sustained in conjunction with or prior to, during, or after the regatta.

9. [NP] [DP] EQUIPMENT INSPECTION - CERTIFICATES

All boats shall be inspected before racing in the days specified in this Notice of Race. A boat will be eligible to compete and complete event registration after Equipment Inspection has been completed.

Each boat shall have a valid Measurement certificate, accompanied by the hull measurement form (IMF), both of which must be presented during the pre-race inspection. Only original or certified true copies of these documents shall be accepted. Event charter boats are excluded from this obligation, but they must be accompanied by original or certified true copies of their measurement form.

Sails shall be certified and marked by an official measurer before being present for inspection. No sail shall be accepted for inspection if it is not certified according to the class rules, and no member of the equipment inspection team shall certify sails on the spot.

Random checks may be made at any time during the Championships

10. SAILING INSTRUCTIONS and EQUIPMENT INSPECTION INSTRUCTIONS

The Sailing instructions will be available at the race office for each competitor and Team Leader after the final country's registration has been completed. The Equipment Inspection Instructions will be available for each competitor and Team Leader at the race office at registration.

11. LADIES CREWS IDENTIFICATION

Mainsails used in the Ladies World Championship shall carry a red rhombus (length of diagonals minimum 250mm) above the top batten pocket on both sides. The position should be approximately in the centre of the triangle formed by the top batten and the mainsail head.

12. [NP] SAFETY REGULATIONS

Competitors shall wear a personal flotation device at all times when afloat in accordance with Class rule **C.3**.

Wetsuits and dry suits are not considered as personal flotation devices.

13. COURSES

The courses will be trapezoid.

The target time of a race will be **45** minutes.

14. JURY, PROTESTS and PENALTIES FOR BREAKING RULES OF PART 2

An International Jury will be appointed in accordance to **RRS 91(b)**. Its decisions will be final as provided in **RRS 70.5**.

15. SCORING

15.1 RRS Appendix A will apply.

15.2 Qualifying series:



www.420sailing.org



All 6 qualifying races must be completed to constitute the qualifying series.

The Championships will be valid if, at least, the qualifying series are completed.

All race scores from the qualifying series will be carried forward to the final series.

15.3 Final series

There will be 6 races in the final series.

15.4 Single series

There will be 12 final races in the single series.

15.5 Discards

- When fewer than 5 races have been completed, a boat's series score is the total of her race scores,
- When 5 or more races have been completed, a boat's series score is the total of her race scores excluding her worst score,

No more than **three** races can be competed each day.

16. PRIZES

The first **three** crews in each fleet shall be given a trophy.

The first **three** World crews in the **gold fleet** shall receive a **Gold, Silver** and **Bronze** medal.

The first **three** Ladies World crews in the **gold fleet** shall receive a **Gold, Silver** and **Bronze** medal.

The first **three** U17 World crews shall receive a **Gold, Silver** and **Bronze** medal.

The first **Junior** crew shall receive a medal and the John Merricks Trophy (helm and crew shall both be aged 18 or under).

The first **Junior** Ladies crew shall receive a medal and the John Merricks Trophy (helm and crew shall both be aged 18 or under).

World Championship International 420 Class Challenge Cup - this trophy will be presented to the gold medallist in the World Championship fleet.

International 420 Class Ladies World Championship Challenge Cup - this trophy will be presented to the gold medallist in the Ladies World Championship fleet.

Huck Scott Memorial Trophy - this trophy is awarded to the youngest boat crew competing in the championship, in either the Open or the Ladies. The lowest combined age (helm and crew) at the end of the year will be used.

William Sanchez Trophies (2) - these trophies are awarded to the highest placed boat, both aged 16 or under, at the end of the year, one for the World fleet and one for the Ladies fleet.



Francis Mouvet Trophy - This trophy will be awarded to the nation who has the highest placed 3 boats in the World Championship using both the World and Ladies fleets.

The prizes are given to both members of a crew.

17. TITLES

The title of **International 420 Class World Champion** will be awarded to the first team in the ranking list of the World Championship.

The title of **International 420 Class Ladies World Champion** will be awarded to the first team in the ranking list of the Ladies World Championship.

The title of **International 420 Class U17 World Champion** will be awarded to the first team in the ranking list of the U17 World Championship.

The title of **International 420 Class Junior** will be awarded to the first junior team in the ranking list of the World Championship.

The title of **International 420 Class Junior Ladies** will be awarded to the first junior ladies team in the ranking list of the Ladies World Championship.

A junior team is defined as a crew who shall not have attained is or her 19th birthday on or before 31.12.2016 (i.e. born after 31st. December 1997) for both members of the crew.

U17 team is defined as a crew who shall not have attained his or her 17th birthday on or before 31.12.2016 (i.e. born after 31st. December 1999) for both members of the crew.

18. COACH BOAT AND SUPPORT PERSONAL

All coach and support boats shall display the 3 letter national code of their W.S. Member National Authority at all times while afloat clearly visible from both sides of the boat and the number code of the organizing authority. The minimum height for the letters shall be 200 mm.

All registered support boats shall act as rescue boats in case of need (more details in Sailing Instructions).

All support boats shall have third party liability insurance with a minimum cover of **EUR 1,500,000** per event or equivalent. A certificate of such insurance shall be shown during registration.

19. INSURANCE

Each competitor shall produce at registration an evidence of valid third party insurance with a minimum cover of **EUR1,500,000** or the equivalent in other currencies.

Each participant warrants the suitability of his or her boat for the event.

20. RIGHTS TO USE NAMES and LIKENESSES

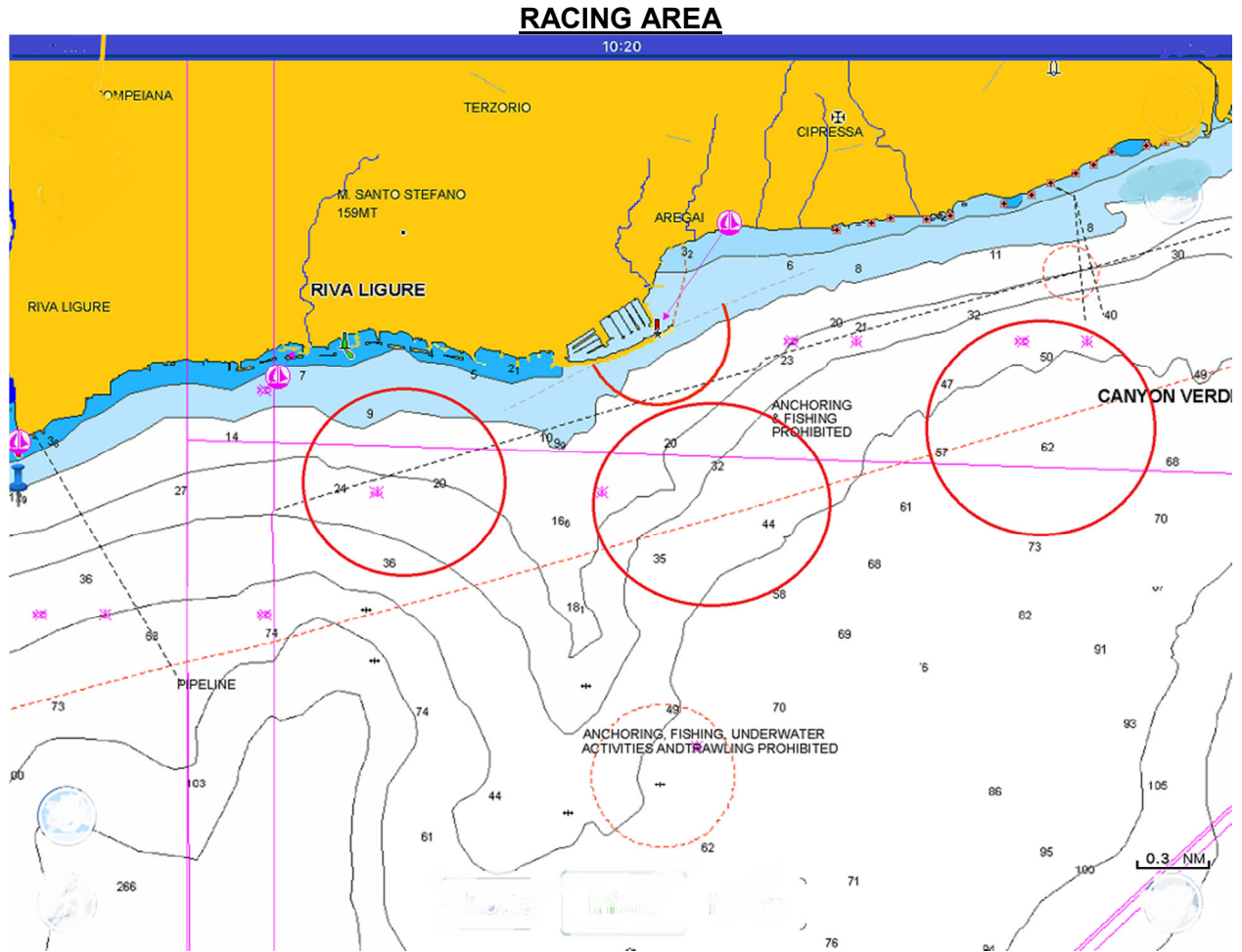
By participating in the regatta competitors automatically grant to the International 420 Class Association and to the Organizing Authority and their sponsors, the right in perpetuity to make, use and show, from time to time at their discretion, any motion pictures and live, taped or filmed television and other reproductions of the athlete during the period of the competition without compensation.



21. [DP] [NP] CAMERAS AND ELECTRONIC EQUIPMENT

Boats may be required to carry cameras, sound equipment or positioning equipment as specified by the Organizing Authority.

APPENDIX A - RACING AREA



GENERAL INFORMATION (not part of Notice of Race)

About the Club/Venue:

Location details: Marina degli Aregai

Venue Opening: Santo Stefano al Mare - Italy

Web: www.yachtclubsanremo.it; 2016worlds.420sailing.org;

Email: 420.world2016.sanremo@gmail.com

Contact person: Umberto Zocca and Fernanda Sesto

Tel: +39 0184503760

Fax: +39 0184546038

Email: 420.world2016.sanremo@gmail.com

Web: www.yachtclubsanremo.it



www.420sailing.org



Federazione Italiana Vela



420 Charter Boats: Please contact Coach Boat Services for information on 420 and rib charter at charter@coachboat.com

Shipping: If you are shipping containers to Sanremo, there are regular container links to the Port of Genova and Port of Livorno.

The Port of Genova is 140 km to the north-east and the Port of Livorno is 322 km to east and south of Genova. If you would like any advice on shipping please contact the Yacht Club Sanremo on: Contact Persons Umberto Zocca or Fernanda Sesto

Accommodation and Travel: For booking accommodations inquires please contact:

Mamberto International Travel Organization

Ref: Gabriele Buccheri

Tel: +39 0183 498555

Cell: +39 345 6868088

Email: Gabriele.buccheri@mamberto.com

Email: manuela.tottone@mamberto.com

Web: www.mamberto.com/home

How to get To Marina degli Aregai:

By Car: Enter the address for Venue Marina degli Aregai: put in your GPS: Via Gianni Cozzi, 1, 18011 Santo Stefano al Mare, Province of Imperia – Italy. For route planning go to: www.viamichelin.com

By Plane : If you are coming from Italy (Genova or Milan) you need to get out in Imperia Est and if you are coDistance from venue:

Nice International airport - 60 km: <http://www.nice.aeroporto.fr/>

Cristofolo Colombo airport - 140 km: www.airport.genova.it/

Malpensa o Linate International Airports - 270 km: www.milanomalpensa-airport.com/en and www.aerpuertos.net/aerpuerto-de-milan-linate/ ming from France you go out at Arma di Taggia

By Train: Regular National train lines travel to Sanremo from almost all cities in Italy and some Trains from France: The central train station is Sanremo Train Station in the heart of the city of Sanremo and close to bus station at “Piazza Colombo”. Tickets are sold in the train station building. For more information visit www.trenitalia.com. Also for trains coming from Italy, you can get out at Station Imperia Porto Maurizio.

By Ferry : The Port of Genova is the nearest Commercial Ferry Port at a distance of 140km.

Weather and Current: There is predominantly south-westerly to westerly sea breezes, with the range of 5 to 15 knots in afternoons in July. Can also have north-easterly 15 to 18 Knots. Average Temperature: 23-28°C; Average water temperature 20-24 C

Weather Forecast

Wind finder: <http://www.windfinder.com/forecast/rumpiminga>



Wind guru: <http://www.windguru.cz/int/index.php?sc=240482>

Lamma: <http://www.lamma.rete.toscana.it/mare/modelli/vento-e-mare-hr>

City weather

Meteo.it: <http://www.meteo.it/previsioniLocalitaMare/Sanremo/istat-3201007>

Other information: If you have any queries about the Championship, please contact us:

International 420 Class Association

Email: office@420sailing.org

Web: www.420sailing.org

Championship Organizer

Yacht Club Sanremo

C.so Nazario Sauro 32 - Molo Nord - Sanremo (IM)

+39 0184503760

Fax: +39 0184546038

Email: 420.world2016.sanremo@gmail.com

Contact Persons: Umberto Zocca or Fernanda Sesto

Web: www.yachtclubsanremo.it

Container storage

In the correct area where there is trailer park

Car Park

Site Map on website

Insurance

The Organizing Authority can provide insurance.

Sail Repair Service

Zaoli Sails on site

