

# 2019 Hempel Youth Sailing World Championships

Notice of Race & Sailing  
Instructions (NoR/SI)

To be supplemented by the Gdynia  
Sailing Instructions (GSI)

13–20 July 2019  
Gdynia, Poland

Issued by World Sailing on 8 January 2019  
Changes approved on 15 March 2019



Poland 2019  
Youth  
Sailing World  
Championships



## Official Suppliers

### 2019 Hempel Youth Sailing World Championships



The 49<sup>th</sup> edition of the Hempel Youth Sailing World Championships will be held at Gdynia, Poland, from 13 to 20 July 2019.

The Organising Authority (OA) is World Sailing in conjunction with the Polish Yachting Association.

## 1 Rules

- 1.1 The regatta will be governed by the rules as defined in The 2017-2020 Racing Rules of Sailing (RRS).
- 1.2 RRS Appendix P, Special Procedures for Rule 42, will apply.
- 1.3 Class rules regarding membership will not apply.
- 1.4 Under RRS 86.2, World Sailing has authorized that RRS Appendix G may be changed in the **Notice of Race and** Sailing Instructions.
- 1.5 National Authority Prescriptions will not apply.
- 1.6 Decisions of the International Jury will be final as provided in RRS 70.5.
- 1.7 A boat shall neither make radio transmissions while racing nor receive radio communications not available to all boats, except in an emergency or when using equipment provided by the race committee. This restriction also applies to mobile telephones.
- 1.8 For the Boy's Skiff, Girl's Skiff and Mixed Two Person Multihull, RRS 44.1 and RRS P2.1 are changed so that the Two-Turns Penalty is replaced by the One-Turn Penalty.
- 1.9 In RRS 44.2 insert after the first sentence: However, if Mark 1a is set, a boat may delay taking a penalty for an incident in the zone around Mark 1 or on the leg between Mark 1 and Mark 1a, until she has passed Mark 1a.
- 1.10 In RRS 63.1 add '64.4(b),' after '64.3(d),'
- 1.11 In all rules governing this regatta:
  - 1.11.1 Both 'athlete' and 'competitor' mean a person competing or intending to compete in the event.
  - 1.11.2 The term 'support team' means coaches, team leaders and other support personnel.
  - 1.11.3 [SP] denotes a rule for which a standard penalty may be applied by the race committee without a hearing or a discretionary penalty applied by the International Jury with a hearing; and
  - 1.11.4 [NP] denotes a rule that shall not be grounds for protests by a boat. This changes RRS 60.1(a).
- 1.12 If there is a conflict between languages the English text will take precedence.

## 2 Venue

- 2.1 The regatta will be at the Kosciuszki Square and Mercure Gdynia Centrum Hotel, Gdynia, Poland.
- 2.2 The racing area will be Gdanska Bay. The location of the racing areas will be published on the World Sailing website.

## 3 Eligibility and Entry

- 3.1 Only competitors, team leaders and coaches registered by a MNA in good standing with World Sailing are eligible to enter the Hempel Youth Sailing World Championships.
- 3.2 MNAs shall submit the entry form that can be found on the event website [www.worldsailingywc.org](http://www.worldsailingywc.org) and pay the required fees considering the following deadlines:

Date	Deadline
15 February 2019	<b>Entry and payment deadline</b> – all entries and payments must have been received.
13 June 2019	<b>Registration Deadline</b> - Deadline for competitor names and complete registration

- 3.3 To remain eligible competitors must complete the online registration by 13 June 2019.
- 3.4 World Sailing Eligibility Code shall apply. Each athlete shall be registered as a World Sailing sailor on the World Sailing website.
- 3.5 Competitors shall be above the age of 12 years and under the age of 19 years on 31 December 2019 (born after 31 December 2000 and no later than 31 December 2007).
- 3.6 Unless otherwise approved by the IOC or World Sailing in accordance with regulation 19.12, each competitor shall be a national of the country of the Member National Authority (MNA) which enters the boat. Each competitor shall present proof of their nationality or the approved waiver when requested.
- 3.7 A MNA may enter one crew in all or any of the following events:

Event	Equipment	Event	Equipment
Boy's Windsurfer	RS:X with 8.5 m2 Sail and 60 cm fin	Girl's Skiff	29er
Girl's Windsurfer	RS:X with 8.5 m2 Sail and 60 cm fin	Boy's Two Person Dinghy	420
Boy's One Person Dinghy	Laser Radial	Girl's Two Person Dinghy	420
Girl's One Person Dinghy	Laser Radial	Mixed Two Person Multihull	Nacra 15
Boy's Skiff	29er		

- 3.8 Gender requirements will apply as per the table in 3.7.

- 3.9 A MNA may register one team leader and one coach. If a MNA enters competitors in three or more classes, one additional coach is permitted.
- 3.10 A MNA which has not yet chosen a team before the 15 February 2019 deadline must provide World Sailing with information about its schedule for selecting a team. However, this does not exempt the MNA from paying the championship fee before the deadline. No additions or changes to the entry list can be accepted after 15 February 2018 without written approval of World Sailing and in consultation with the Organising Committee and the equipment suppliers.
- 3.11 The maximum number of entries (quota) for each of the 9 events is set out in the following table:

Event	Quota	Event	Quota
Boy's Windsurfer	40*	Girl's Skiff	30
Girl's Windsurfer	40*	Boy's Two Person Dinghy	30
Boy's One Person Dinghy	60	Girl's Two Person Dinghy	30
Girl's One Person Dinghy	60	Mixed Two Person Multihull	25
Boy's Skiff	30		

\*the quota as been increased because there are no supplied equipment restrictions

- 3.12 World Sailing may modify the quota for an individual event, in consultation with the hosts and the equipment suppliers.
- 3.13 An entry can only be confirmed once full payment has been received. Where the quotas (fleet sizes) are exceeded by the numbers of confirmed paid places, a waiting list will be created. Thereafter, if a place becomes available, the entries will be allocated in the order that the application is received until the Event Quota is reached.
- 3.14 Other Requirements:
- 3.14.1 Competitors and support team will receive an accreditation card at registration at the venue which must be displayed at all times. Access to competitor's preparation and residential areas can be restricted.
- 3.14.2 The Medical Treatment Permission and Medical History forms must be submitted for each competitor no later than team registration. This form does not give dispensation for taking prescribed medication. For medication declarations, please follow procedures as given in the World Sailing Anti-Doping Code (World Sailing regulation 21).
- 3.14.3 Each team is required to bring a 250ml bottle containing water from their home seas or lakes for the Mixing of the Waters Ceremony.
- 3.14.4 Each team is required to bring to the venue two of their national flags in approximate size 1.0 x 1.5m

## 4 Fees

- 4.1 Fees are stated in Euros and include any local taxes. World Sailing acts as an agent and collects the entry fee for the event on behalf of the Polish Yachting Association.

Event	Entry Fee	Late Entry Fee
One Person Events	€ 1,000	€ 1,500
Two Person Events	€ 2,000	€ 3,000
Team Leaders and Coaches	€ 1,000	€ 1,500

- 4.2 There is a non-refundable Admin Fee of €10 per bank transaction.

- 4.3 The championship fee will include airport shuttle from and to Gdansk Lech Walesa Airport, accommodation, meals (starting from the midday meal on 13 July 2019 and ending with the breakfast meal on 20 July 2019).

- 4.4 Equipment will be provided for the competitors free of charge and as specified in Addendum B, with the exception of the Boys and Girls Windsurfers (RS:X with the 8.5m rig).

- 4.5 RS:X competitors will compete with their own equipment (RS:X with the 8.5m rig), in compliance with their class rules.

- 4.6 Only the supplied equipment, and permitted personal equipment, is allowed in the venue.

- 4.7 If an entry is cancelled by the national authority, the entry fee will be refunded as follows:

Cancelation Date	Entry Fee Refund
Before 14 February 2019	100%
Between 14 February and 1 May 2019	50%
After 1 May 2019	No refund
<b>For RS:X only – Before 1 May 2019</b>	<b>100%</b>

- 4.8 A damage deposit of €250 for One Person Dinghy and €350 for the Two Person Dinghy, Skiff and Multihull events per supplied equipment will be required. In case of damage to any equipment, the competitor will be required to pay an additional amount in order to maintain the damage deposit balance to its original amount. This can be either paid by credit card or by cash.

- 4.8 A damage deposit by way of credit card authorisation will be required by the accommodation for possible damage to the accommodation premises or for services provided by the accommodation such as additional food, drink and the use of telephone(s), etc.

## 5 Risk Statement

Competitors and support team participate in the championships entirely at their own risk and they are reminded of the provisions of RRS 4, Decision to Race. Sailing is by its nature an unpredictable sport and therefore involves an element of risk. By taking part in the event, each competitor agrees and acknowledges that:

- 5.1 They are aware of the inherent element of risk involved in the sport and accept responsibility for the exposure of themselves, their crew and their boat to such inherent risk whilst taking part in the event;
- 5.2 They are responsible for the safety of themselves, their crew, their boat and their other property whether afloat or ashore;
- 5.3 They accept responsibility for any injury, damage or loss to the extent caused by their own actions or omissions;
- 5.4 By participating in any race, they are satisfied that their boat is in good order, equipped to sail in the event and they are fit to participate;
- 5.5 The provision of a race management team, patrol boats, umpires and other officials and volunteers by the organiser does not relieve them of their own responsibilities;
- 5.6 The provision of patrol boat cover is limited to such assistance, particularly in extreme weather conditions, as can be practically provided in the circumstances.
- 5.7 They will familiarize themselves with any venue/event specific risks, adhere to rules and information produced for the venue/event and attend any venue/event safety briefings.

## 6 Media Rights

By participating in the Championships, competitors and support team automatically grant to the organizing authority, World Sailing and their sponsors, the right in perpetuity to make, use and show, from time to time at their discretion, any motion pictures and live, taped or filmed television and other reproductions of the athlete during the period of the competition without compensation.

## 7 [DP] Code of Conduct

- 7.1 Competitors and support persons shall comply with any reasonable request from a regatta official or equipment supplier representative.
- 7.2 Competitors shall handle any boats or equipment provided by the organizing authority with proper care and seamanship, and in compliance with any written instructions.
- 7.3 [SP] Boats not racing shall avoid the area where boats are racing and any official boats.

- 7.4 [SP] Boats that are on a Course Area to which they are not assigned shall remain clear of the area where boats are racing and of any official boat.
- 7.5 World Sailing may reduce or remove a prize in the case of misconduct or refusal to comply with any reasonable request, including attendance at official functions.

## 8 [DP] Identification and Advertising

- 8.1 When provided by the organizing authority, boats or competitors shall carry, display or wear the following as instructed:
- 8.1.1 Bibs for all competitors;
  - 8.1.2 Coloured bibs for Event leaders (1st, 2nd and 3rd);
  - 8.1.3 Coloured dots on the mainsail for Event leaders (1st, 2nd, 3rd);
  - 8.1.4 Bow number;
  - 8.1.5 Event advertising;
  - 8.1.6 Country Codes for boats and sails;
  - 8.1.7 National Flags for sails;
  - 8.1.8 Cameras and sound equipment; and
  - 8.1.9 [SP] Tracking and timing system equipment.

## 9 [DP] [NP] Safety Regulations

- 9.1 The Race Committee will protest a boat for a breach of these safety regulations.
- 9.2 Competitors shall wear personal flotation devices at all times while afloat, except briefly while changing or adjusting clothing or personal equipment. The **Technical Committee** reserves the right to reject any buoyancy jacket which it considers unsuitable. When no specifications are given in the class rules, personal buoyancy complying with minimum standard ISO 12402-5 (CE 50 Newtons), or USCG Type III, or AUS PFD 1, or EN 393, will be accepted.
- 9.3 Boats not leaving the shore for a scheduled race shall promptly notify the race office.
- 9.4 [SP] Check-Out and Check-in Ashore
- 9.4.1 Both helm and crew shall individually check-out before racing by personally collecting their tally in exchange for their accreditation card which is then left ashore.
  - 9.4.2 Both helm and crew shall individually check-in immediately on returning to shore after racing, but no later than the protest time limit, by returning the tally personally to tally control in exchange for their accreditation card.
  - 9.4.3 Tallies shall be worn visibly, over clothing, on the right wrist by both helm and crew while afloat.
  - 9.4.4 The Tally Control Point will be located near the launching ramps.



- 9.5 A boat that retires from racing shall notify the race committee before leaving the racing area, or if that is not possible, shall notify the Race Office as soon as possible after returning ashore but no later than the protest time limit, by completing a retirement declaration form.
- 9.6 When Flags AP over H or N over H are displayed from a RC vessel, all boats shall immediately return ashore and will wait there for further information. (This changes race signals AP over H and N over H.)

## 10 Communications with Competitors

- 10.1 Notices to competitors will be posted on the Official Notice Board located outside the Race Office and on the website [www.worldsailingywc.org](http://www.worldsailingywc.org)
- 10.2 Signals ashore will be displayed on the flagpoles located near the launching ramps.
- 10.3 Changes to the Sailing Instructions:
- 10.3.1 Changes to the Sailing Instructions will be posted no later than two hours before the scheduled time of the first race affected by the change.
- 10.3.2 Any change to the Sailing Instructions shall be approved by the World Sailing Technical Delegate.
- 10.4 When a visual signal is displayed over an area or event flag, the signal applies only to that area or event. This changes the race signals preamble.
- 10.5 Event flags will be class insignia on the following background:

Event	Class Insignia	Background Colour
Boy's Windsurfer	RS:X	White
Girl's Windsurfer	RS:X	Light Blue
Boy's One Person Dinghy	Laser	White
Girl's One Person Dinghy	Laser	Light Blue
Boy's Skiff	29er	White
Girl's Skiff	29er	Light Blue
Boy's Two Person Dinghy	420	White
Girl's Two Person Dinghy	420	Light Blue
Mixed Two Person Multihull	Nacra 15	White

- 10.6 When flag AP is displayed ashore, '1 minute' is replaced with '60 minute' in the race signal AP. This changes Race Signals.
- 10.7 [SP] A boat shall not leave their designated place in the dinghy park or beach until Flag D is displayed ashore. The warning signal will be made not less than 60 minutes after flag D is displayed or not before the scheduled time, whichever is later.

## 11 [DP] Supplied Equipment and Equipment Inspections

- 11.1 Addendum B – Supplied Equipment will apply.
- 11.2 **Supplied** equipment will not be required to be pre-measured. However, **any** boat or equipment may be inspected at any time for compliance with the rules.
- 11.3 All competitors in the Mixed Multihull event shall wear a helmet that shall be to the minimum standard EN1385 or EN 1077 or equivalent.
- 11.4 **The equipment will be allocated by a draw arranged by the Organizing Committee and World Sailing Technical Delegate before the event. Each athlete shall retain the same equipment throughout the regatta.**
- 11.5 **For RS:X only: the date and time for equipment inspection will be established by a draw conducted before the regatta, and posted on the Official Notice Board no later than 12 July 2019. The designated time of equipment inspection may be subject to change by the Technical Committee.**
- 11.6 **After equipment inspection, no board or inspected equipment shall be taken from the venue or the racing areas and their adjacent waters without written permission of the World Sailing Technical Delegate.**
- 11.7 **Only entered competition boards may be kept in the venue boat park unless permission is granted by the World Sailing Technical Delegate.**
- 11.8 **Any boat or equipment may be re-inspected at any time.**

## 12 Format

The regatta will consist of a single series.

# 13 Schedule

13.1 The Championship schedule will be as follows:

Date	Time	Event
Saturday 13 July	09:00 to 18:00	Registration, equipment allocation and RS:X equipment measurement
		Training
	18:00	First briefing for team leaders
Sunday 14 July	10:00	Competitors Briefing
	TBA	Practice Race
	18:30	Opening Ceremony
Monday 15 July to Friday 19 July	TBA	Races
Friday 19 July	19:00	Closing Ceremony
Saturday 20 July		Departure day

13.2 The venue is not available for practice sailing between 13 June and 12 July 2019.

13.3 The number of races will be as follows:

Event	Number of Races
One Person Dinghy and Two Person Dinghy	9
Open Multihull, Windsurf and Skiff	13

13.4 The provisional race schedule, including the time of the first warning signals, and assignments of Events to course areas will be posted as GSI Addendum 3 no later than one week before the first race.

13.5 An update to GSI Addendum 3 will be posted daily no later than 20:00 on the previous evening of any race affected.

13.6 Any reassignment of Events to course areas will be posted:

13.6.1 before 09:00 on the day it will take effect; or

13.6.2 when flag AP is displayed ashore, 30 min before flag AP for that Event or fleet is removed; or

- 13.6.3 when flag AP is displayed afloat, the course area may be changed. A race committee boat will display flag L over the Event(s) flag and move to the new course area.
- 13.7 Races not sailed on the scheduled day may be sailed on the following date at the discretion of the race committee.
- 13.8 On 13 and 14 July, practice sailing will be permitted only within times to be advised.
- 13.9 On 19 July, no warning signal will be made after 15:00 h.

## 14 The Courses

- 14.1 The courses will be Windward/Leeward or Trapezoid. The diagrams in NoR/SI Addendum B show the courses, the course designations, the approximate angles between legs, the order in which marks are to be passed, and the side on which each mark is to be left.
- 14.2 To change the next leg of the course, the race committee will (a) lay a new mark, (b) move the finishing line, or (c) move the leeward gate. When a new mark is laid, the original mark will be removed as soon as possible. When in a subsequent change a new mark is replaced, it will be replaced by an original mark.
- 14.3 Courses will not be shortened. This changes RRS 32.

## 15 The Start

- 15.1 The starting line will be between a staff displaying an orange flag on the race committee vessel at the starboard end and either
  - (a) the course side of the port-end inflatable starting mark, or
  - (b) a staff displaying an orange flag on the race committee vessel at the port end.
- 15.2 [DP] A buoy may be attached to the race committee starting boat anchor line just below keel depth. Boats shall not pass between this buoy and the race committee starting boat at any time. This buoy is part of the race committee starting boat ground tackle.
- 15.3 [DP] When a starting sequence is in progress, boats whose warning signal has not been made shall avoid the starting area. The starting area is defined as a rectangle 75 meters from the starting line and marks in all directions.
- 15.4 Rule 26 and Preparatory Signals in Race Signals are deleted. Races will be started using the following signals. Times shall be taken from the display of visual signals. This changes RRS 26 and Race Signals.

Minutes before starting signal	Visual signal displayed	Visual signal removed	Sound signal	Means
6	Event flag -Starting penalty if required (U or Black) Rule 42 (flag O if Applicable)		No sound	Event to start and applicable rules
5	White flag with number 5		One	Warning signal
4	Blue flag with number 4	White flag	One	Preparatory signal
3	Pink flag with number 3	Blue flag	One	Three minutes
2	Red flag with number 2	Pink flag	One	Two minutes
1	Yellow flag with number 1	Red flag	One long	One minute
0	Green flag	Yellow flag	One	Start signal
+1		Green flag and Class Flag (U or Black and O)	No sound	

15.5 To alert boats that a race or sequence of races will begin soon, the orange starting line flag will be displayed with one sound at least five minutes before a warning signal is made.

15.6 The warning signal for each succeeding race will be made as soon as practicable.

## 16 The Finish

16.1 The finishing line will be between a staff displaying an orange flag on the race committee vessel and either

(a) the course side of the nearby inflatable finishing mark, or

(b) a staff displaying an orange flag on the nearby race committee vessel.

# 17 Time Limits and Target times

17.1 Time limits and target times are as follows:

Event	Time Limit	Mark 1 Time Limit	Finish Window	Target Time
Laser Radial	75	25	15	50
420	75	25	15	45
29er and Nacra 15	50	20	10	30
RS:X	45	20	10	20-25

17.2 If no boat rounds Mark 1 within the Mark 1 time limit, the race committee shall abandon the race.

17.3 Any boat that does not finish within the Finish Window (time after the first boat finishes) shall be scored DNF without a hearing. This changes RRS 63.1 and A5.

# 18 Scoring

18.1 The Low Point System of RRS Appendix A will apply. RRS B8 is deleted.

18.2 When fewer than three races have been completed, a boat's series score will be the total of her race scores. When three or more have been completed, a boat's score will be the total of her race scores excluding her worst score.

18.3 A boat starting later than 4 minutes after her starting signal will be scored Did Not Start (DNS). This changes RRS A4 and A5.

18.4 One race is required to be completed to constitute a regatta.

18.5 To request correction of an alleged error in posted race or series results, a boat may complete a scoring enquiry form available at the Race Office.

18.6 Nations Trophy

18.6.1 For each event on each day:

(i) Each National Authority will receive points equal to the total of her race scores on that day. National Authorities not entered in an event will be scored for each race, points equal to one more than the number of National Authorities entered in the event.

(ii) National Authorities will then be ranked in order of lowest to highest and the National Authority with the lowest score will receive one point, the second will receive two points and so on.

(iii) If an event does not race on a day, all nations will receive, for that event, points one more than the number of National Authorities entered in the regatta.

(iv) If National Authorities have equal points, the points for the place for which the National Authorities have tied and for the place(s) immediately below shall be added together and divided equally.

- 18.6.2 Each National Authority's day score will be the total of their best four scores from all events.
- 18.6.3 Each National Authority's Nations Trophy score will be the total of their day scores. The National Authority with the lowest Nations Trophy score wins and others will be ranked accordingly.
- 18.6.4 If there is a Nations Trophy score tie between two or more National Authorities, they will be ranked in order of their day scores on the last day. Any remaining ties will be broken by using the tied National Authority's day scores on the next-to-last day, and so on until all ties are broken.

## 19 International Jury, Protests, Penalties and Requests for Redress

- 19.1 An International Jury will be appointed in accordance with rule RRS 91(b).
- 19.2 Protest forms are available at the jury office. Protests and requests for redress or reopening shall be delivered to the jury office within the appropriate time limit.
- 19.3 Notices will be posted within 30 minutes of the protest time limit to inform competitors of hearings in which they are parties or named as witnesses. Hearings will be held beginning at the time posted. Hearings may be scheduled to begin up to 30 minutes before the end of protest time Limit.
- 19.4 Notices of protests by the race committee, equipment committee or protest committee will be posted to inform boats under RRS 61.1(b).
- 19.5 A list of boats that have been penalized under Appendix P for breaking RRS 42 and under SI 19.7 will be posted.
- 19.6 Penalties for breaches of the class rules, or rules in the NoR and Sis marked [DP] or [SP] should the case go to a hearing, are at the discretion of the protest committee and may be less than disqualification.
- 19.7 For breaches of NoR/SI marked [SP], the race committee may apply a standard penalty without a hearing. A list of these breaches and the associated standard penalties will be posted on the Official Notice Board. However, the race committee may protest a boat when they consider the standard penalty to be inappropriate. A boat that has been penalised with a standard penalty can neither be protested for the same incident by another boat nor can another boat request redress for this race committee action. This changes RRS 60.1, 63.1 and Appendix A5.
- 19.8 On the last scheduled day of racing, a request for redress based on a jury decision shall be delivered no later than 30 minutes after the decision was posted. This changes RRS 62.2.
- 19.9 If RRS Appendix N1.4(b) applies, the time limit for requesting a hearing under that rule is 30 minutes after the party was informed of the panel's decision.

## 20 Official Boats

### 20.1 Identification:

Official Boat	Identification
Race Committee	Blue flag with white RC
Jury	White Flag with black JURY
Equipment	Light Blue Flag with black E
Coaches	Pink Flag with black C
WS Coaches	White Flag with red C
Media	Yellow Flag with black M
Safety	Red flag with white Cross
PRO	White flag with black PRO
Measurer	White flag with black M
WS Technical Delegate	White flag with black TD

20.2 Actions by official boats, drones or helicopters shall not be grounds for requesting redress by a boat. This changes RRS 60.1(b).

## 21 Support Boats and Personnel

21.1 Except for World Sailing Coaches, private or team support boats are not permitted.

21.2 On racing days (including practice and training), team leaders and coaches may only go afloat in craft supplied by the Organising Authority, and clearly marked as such.

## 22 [DP] Berthing

Boats shall be kept in their assigned places in the boat park.



## 23 Prizes

- 23.1 World Sailing medals will be awarded to the top 3 boats in each event.
- 23.2 The Youth Sailing World Championship Trophy will be awarded to the winning crew in the Boy's Two Person Dinghy event.
- 23.3 The RYA Trophy will be awarded to the winning crew in the Girl's Two Person Dinghy event.
- 23.4 The St. Lawrence Trophy will be awarded to the winner in the Boy's One Person Dinghy event.
- 23.5 The Royal Netherlands Centennial Trophy will be awarded to the winner in the Girl's One Person Dinghy event.
- 23.6 The Paul Phelan Trophy will be awarded to the winner in the Boy's Windsurfer event.
- 23.7 The St. Moritz Board Sailing Championship Trophy will be awarded to the winner in the Girl's Windsurfer event.
- 23.8 The Paul Henderson Trophy will be awarded to the winner in the Mixed Multihull event.
- 23.9 The Prince Henry the Navigator Trophy will be awarded to the winner in the Boy's Skiff event.
- 23.10 The Malaysia Sailing Association Trophy will be awarded to the winner in the Girl's Skiff event.
- 23.11 The Nations' Trophy will be awarded to the top-scoring national authority team.
- 23.12 The Bengt Julin Trophy will be awarded to a competitor or a National Team that has in the competitors' opinion done most to foster international understanding and has displayed the attributes that should be encouraged in international competition.
- 23.13 Other trophies may be awarded for sportsmanship, exemplary behaviour and rules compliance during the championship.

## 24 Drug testing

Competitors are reminded of the World Sailing rules and regulations concerning the use of banned methods and substances, which are contained in World Sailing Anti-Doping Code. Drug testing may take place during this event.

## 25 Visas and further information

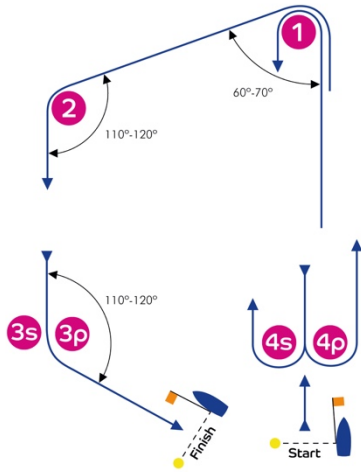
Athletes, coaches, team leaders and fans should confirm if visa is necessary for travel to Poland. Please refer to [https://www.msz.gov.pl/en/travel\\_to\\_poland/visa/](https://www.msz.gov.pl/en/travel_to_poland/visa/) . Please allow for processing time. To obtain a letter from the organizer or assistance with this process, please email: [visas.yw2019@pya.org.pl](mailto:visas.yw2019@pya.org.pl)

For information about accommodation prior to the event please contact [accommodation.yw2019@pya.org.pl](mailto:accommodation.yw2019@pya.org.pl)

For additional questions please contact the event organizers at [helpdesk.yw2019@pya.org.pl](mailto:helpdesk.yw2019@pya.org.pl)

# Addendum A – Course Illustrations

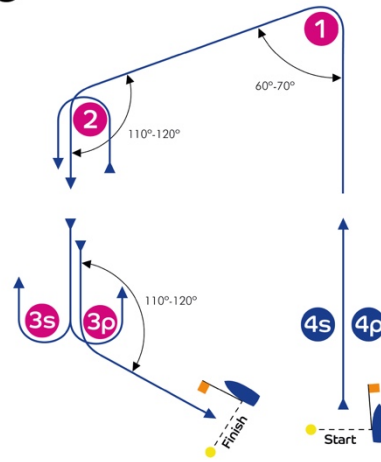
I



Course: Inner Trapezoid

Signal	Mark Rounding Order
I2	Start - 1 - 4s/4p - 1 - 2 - 3p - Finish
I3	Start - 1 - 4s/4p - 1 - 4s/4p - 1 - 2 - 3p - Finish
I4	Start - 1 - 4s/4p - 1 - 4s/4p - 1 - 4s/4p - 1 - 2 - 3p - Finish

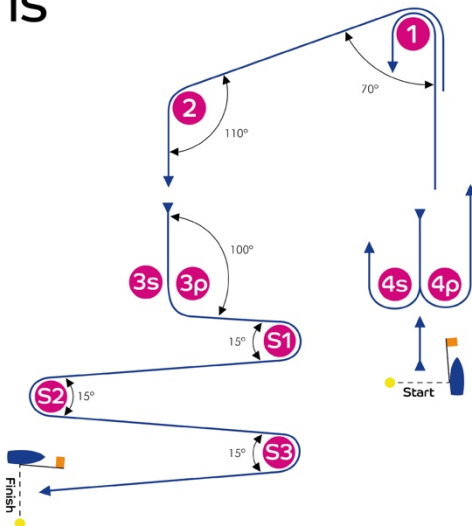
O



Course: Outer Trapezoid

Signal	Mark Rounding Order
O2	Start - 1 - 2 - 3s/3p - 2 - 3p - Finish
O3	Start - 1 - 2 - 3s/3p - 2 - 3s/3p - 2 - 3p - Finish
O4	Start - 1 - 2 - 3s/3p - 2 - 3s/3p - 2 - 3s/3p - 2 - 3p - Finish

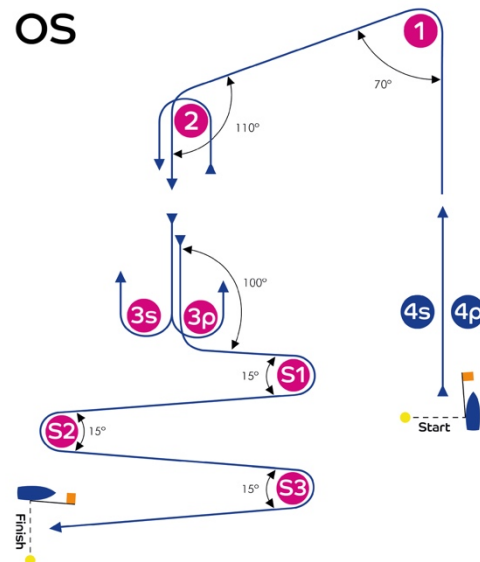
IS



Course: Inner Slalom

Signal	Mark Rounding Order
IS2	Start - 1 - 4s/4p - 1 - 2 - 3p - S1 - S2 - S3 - Finish
IS3	Start - 1 - 4s/4p - 1 - 4s/4p - 1 - 2 - 3p - S1 - S2 - S3 - Finish
IS4	Start - 1 - 4s/4p - 1 - 4s/4p - 1 - 4s/4p - 1 - 2 - 3p - S1 - S2 - S3 - Finish

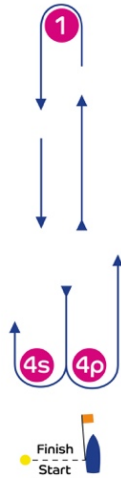
OS



Course: Outer Slalom

Signal	Mark Rounding Order
OS2	Start - 1 - 2 - 3s/3p - 2 - 3p - S1 - S2 - S3 - Finish
OS3	Start - 1 - 2 - 3s/3p - 2 - 3s/3p - 2 - 3p - S1 - S2 - S3 - Finish
OS4	Start - 1 - 2 - 3s/3p - 2 - 3s/3p - 2 - 3s/3p - 2 - 3p - S1 - S2 - S3 - Finish

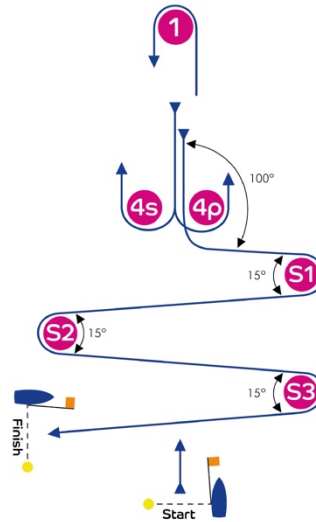
L



Course: Windward/Leeward

Signal	Mark Rounding Order
L2	Start - 1 - 4s/4p - 1 - Finish
L3	Start - 1 - 4s/4p - 1 - 4s/4p - 1 - Finish
L4	Start - 1 - 4s/4p - 1 - 4s/4p - 1 - 4s/4p - 1 - Finish

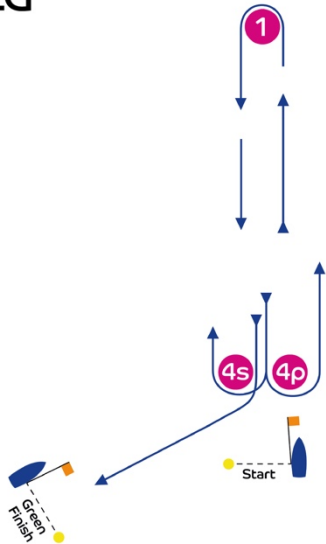
LS



Course: Windward/Leeward With Slalom Finish

Signal	Mark Rounding Order
LS2	Start - 1 - 4s/4p - 1 - 4p - S1 - S2 - S3 - Finish
LS3	Start - 1 - 4s/4p - 1 - 4s/4p - 1 - 4p - S1 - S2 - S3 - Finish
LS4	Start - 1 - 4s/4p - 1 - 4s/4p - 1 - 4s/4p - 1 - 4p - S1 - S2 - S3 - Finish

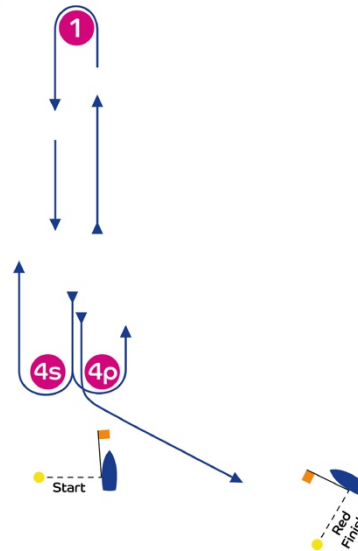
LG



Course: Windward/Leeward

Signal	Mark Rounding Order
LG2	Start - 1 - 4s/4p - 1 - 4s - Finish
LG3	Start - 1 - 4s/4p - 1 - 4s/4p - 1 - 4s - Finish
LG4	Start - 1 - 4s/4p - 1 - 4s/4p - 1 - 4s/4p - 1 - 4s - Finish

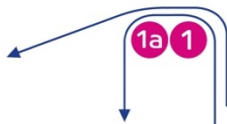
LR



Course: Windward/Leeward

Signal	Mark Rounding Order
LR2	Start - 1 - 4s/4p - 1 - 4p - Finish
LR3	Start - 1 - 4s/4p - 1 - 4s/4p - 1 - 4p - Finish
LR4	Start - 1 - 4s/4p - 1 - 4s/4p - 1 - 4s/4p - 1 - 4p - Finish

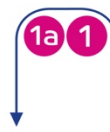
## IA



Course: Same as Course I except with Offset Mark 1A

Signal	Mark Rounding Order
IA2	Start - 1 - 1a - 4s/4p - 1 - 1a - 2 - 3p - Finish
IA3	Start - 1 - 1a - 4s/4p - 1 - 1a - 4s/4p - 1 - 1a - 2 - 3p - Finish
IA4	Start - 1 - 1a - 4s/4p - 1 - 1a - 4s/4p - 1 - 1a - 4s/4p - 1 - 1a - 2 - 3p - Finish

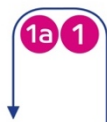
## LA



Course: Same as Course L except with Offset Mark 1A

Signal	Mark Rounding Order
LA2	Start - 1 - 1a - 4s/4p - 1 - 1a - Finish
LA3	Start - 1 - 1a - 4s/4p - 1 - 1a - 4s/4p - 1 - 1a - Finish
LA4	Start - 1 - 1a - 4s/4p - 1 - 1a - 4s/4p - 1 - 1a - 4s/4p - 1 - 1a - Finish

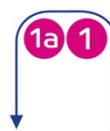
## LGA



Course: Same as Course LG except with Offset Mark 1A

Signal	Mark Rounding Order
LGA2	Start - 1 - 1a - 4s/4p - 1 - 1a - 4s - Finish
LGA3	Start - 1 - 1a - 4s/4p - 1 - 1a - 4s/4p - 1 - 1a - 4s - Finish
LGA4	Start - 1 - 1a - 4s/4p - 1 - 1a - 4s/4p - 1 - 1a - 4s/4p - 1 - 1a - 4s - Finish

## LR A



Course: Same as Course LR except with Offset Mark 1A

Signal	Mark Rounding Order
LR A2	Start - 1 - 1a - 4s/4p - 1 - 1a - 4p - Finish
LR A3	Start - 1 - 1a - 4s/4p - 1 - 1a - 4s/4p - 1 - 1a - 4p - Finish
LR A4	Start - 1 - 1a - 4s/4p - 1 - 1a - 4s/4p - 1 - 1a - 4s/4p - 1 - 1a - 4p - Finish

# ADDENDUM B – SUPPLIED EQUIPMENT

- B1 Failure of supplied equipment will not be grounds for redress. This changes rule 62.1(a).
- B2 The hulls, sails, spars, rigging, control lines and fittings shall be used as supplied. Except if permitted by the NoR or SIs, no modification or addition to the equipment shall be made unless authorized by the Technical Committee.
- B3 A penalty may be given, or the use of the equipment may be withdrawn if, in the opinion of the organizing authority, a competitor treats or handles the equipment without care or in a manner which causes or is likely to cause damage to the equipment
- B4 The Organizing Authority will not supply compasses or other tactical devices, wind indicators, flotation devices, trapeze harnesses, hiking pants, wet or dry suits or other personal gear.
- B5 Competitors may bring and use the following items: sponge, hand bailer, water bottles (only to be attached to the equipment with rope or tape), shockcords, compass, wind indicators, including yarn or thread (may be tied or taped anywhere on the equipment, provided their fitting does not mark, pierce or damage the hull, deck, sails or spars).
- B6 Adhesive tape may be used anywhere above the waterline, but the tape needs to be removable after the event without leaving any permanent damage. There shall be no writing with permanent markers directly on the supplied equipment. No wax shall be applied. Hulls, centreboards and rudders may be cleaned, but only with water and ordinary soap.
- B7 For Laser Radial only:
- B7.1 Competitors must bring their own lines, sheet and blocks (including ratchet block, outhaul, cunningham, traveller and vang systems) and tiller/tiller extension.
- B7.2 Competitors will be supplied with a fully fitted Laser hull including the deck block fitting and the two single blocks and cleats for the deck led cunningham and outhaul systems.
- B7.3 The boats will be supplied with mini side deck cleats for the main sheet, centreboard, rudder, mast, boom and sail.
- B8 For 420 only:
- B8.1 Competitors must bring and use their own tow-rope (in accordance with specification of the class rules).
- B8.2 Competitors may bring and use a fitting made of tape/wood/plastic and shockcord for retaining the spinnaker halyard. This fitting shall only be attached using tape and not in a position above the gooseneck.
- B9 For 29er only:
- B9.1 Boats will be fitted with foot straps.
- B9.2 Competitors may install their own tiller extension, or twin extensions, but the attachment fitting must be left installed on the tiller at the end of the regatta.
- B10 For RS:X only:**
- B10.1 No equipment will be supplied. Competitors shall use their own equipment.**



Poland 2019  
Youth  
Sailing World  
Championships



World Sailing  
20 Eastbourne Terrace  
London W2 6LG  
United Kingdom

Tel: + 44 (0)2039 404 888

[www.sailing.org](http://www.sailing.org)

sport / nature / technology

Official Partners

